

Instruction Manual for EGPS – 1

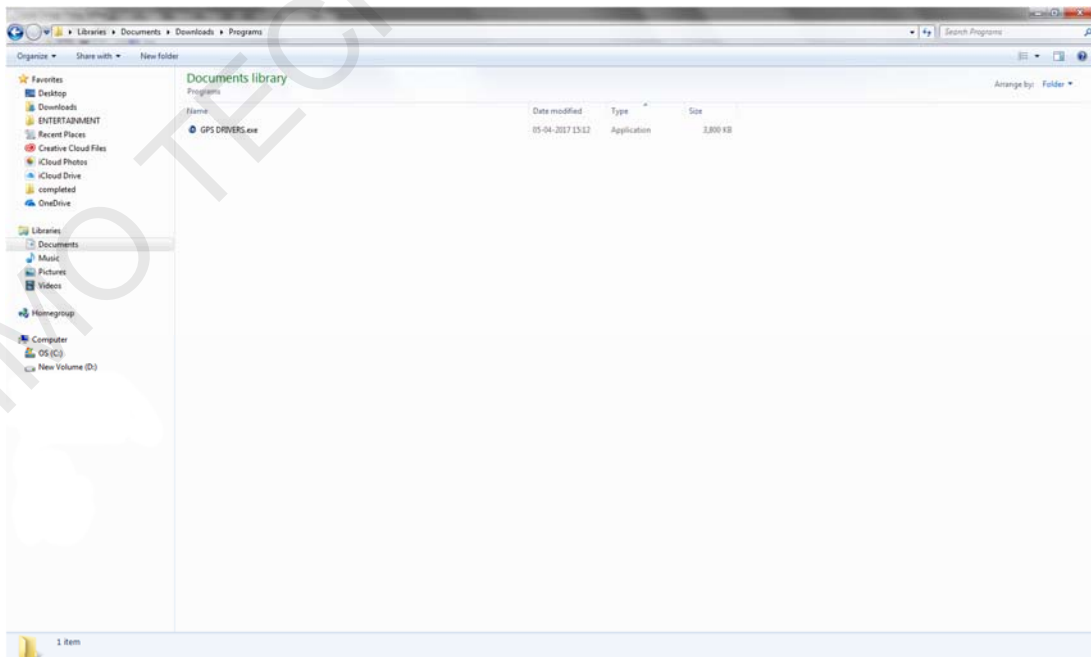
ELIMO™ Technologies introduces USB GPS RECEIVER. Model No. **EGPS - 1**. **EGPS - 1** is without external antenna.

I. Know your device

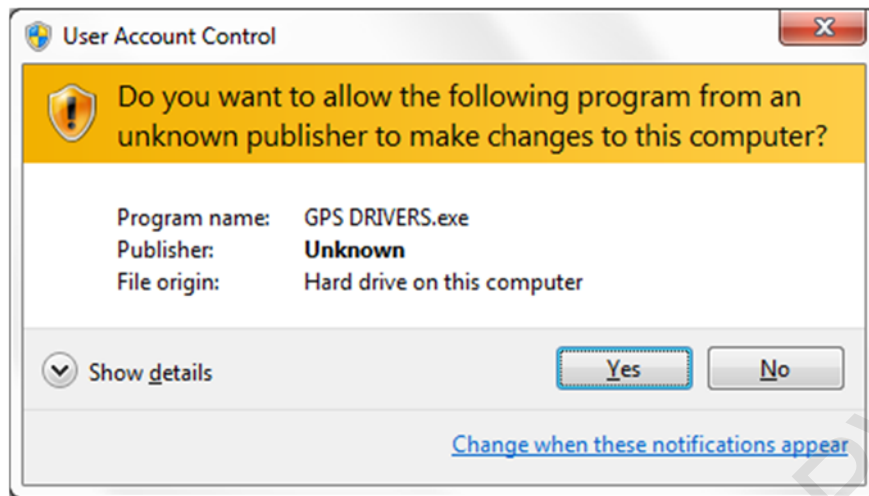


II. Getting started (initial set-up)

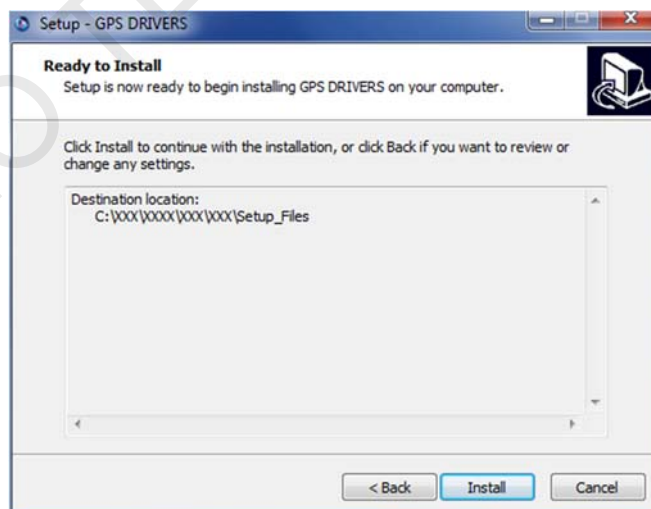
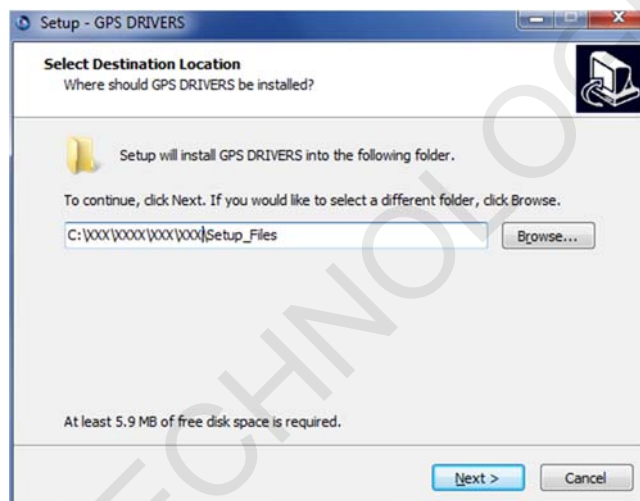
- ▶ Step 1 → Open your internet browser and go to www.elimo.in/downloads.html
- ▶ Step 2 → Click on the link given on the website to *download* the 'GPS_DRIVERS.exe' file.
- ▶ Step 3 → Double click the downloaded GPS_DRIVERS.exe.



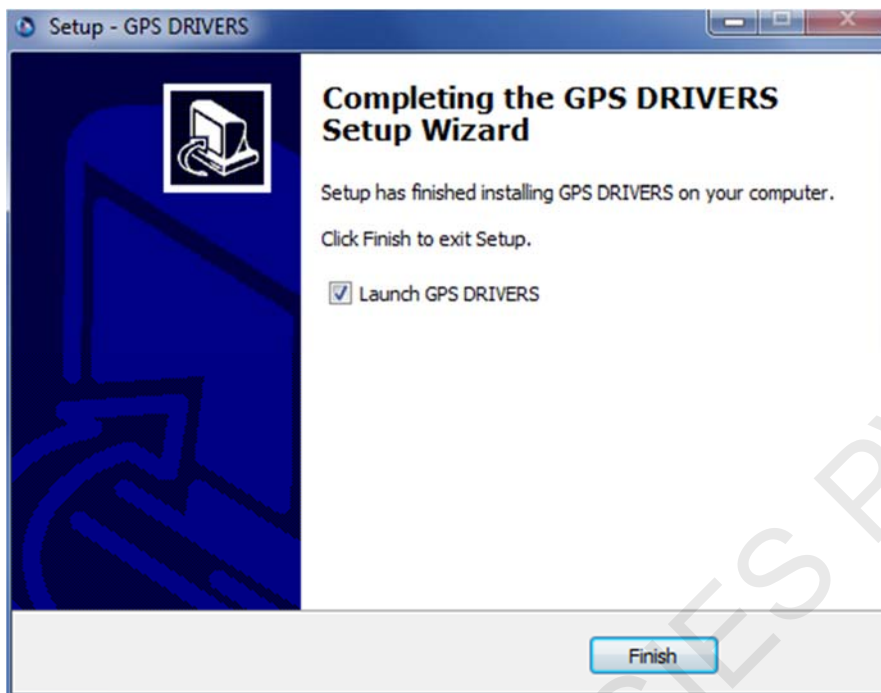
- Step 4 → Click on **Yes**.



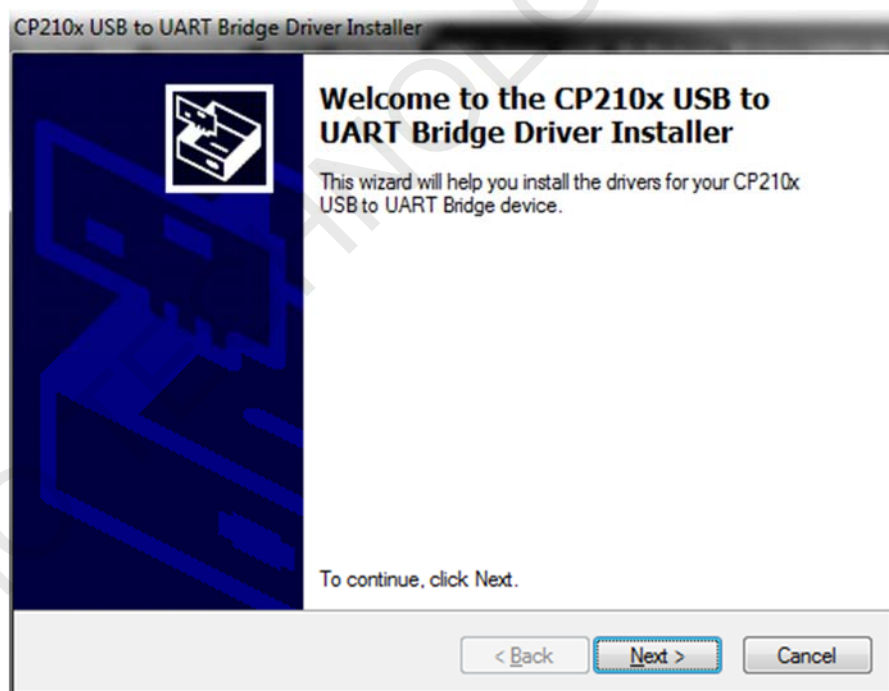
- Step 5 → Click **Next**.



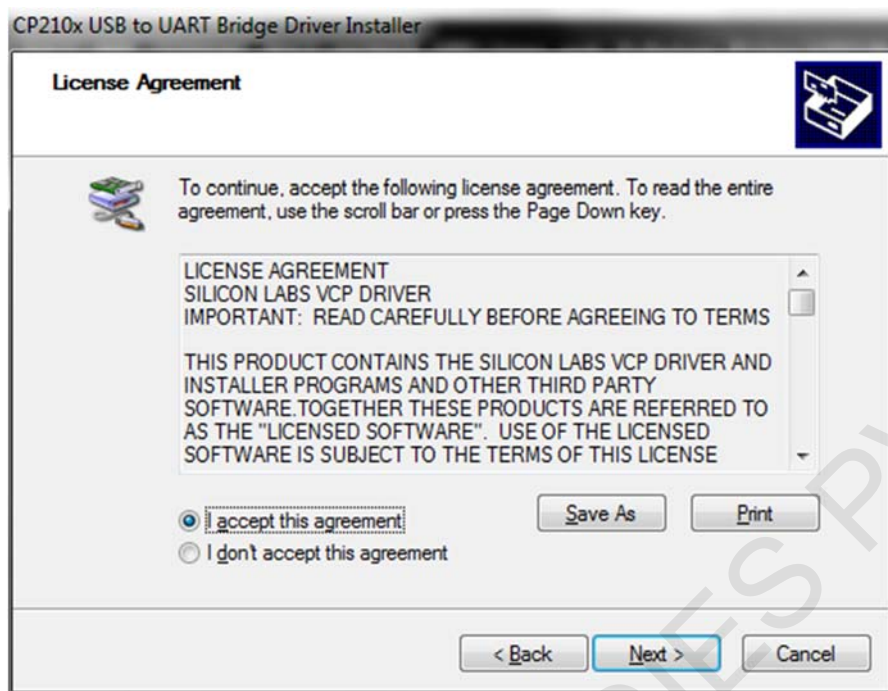
- Step 6 → Click **Finish**.



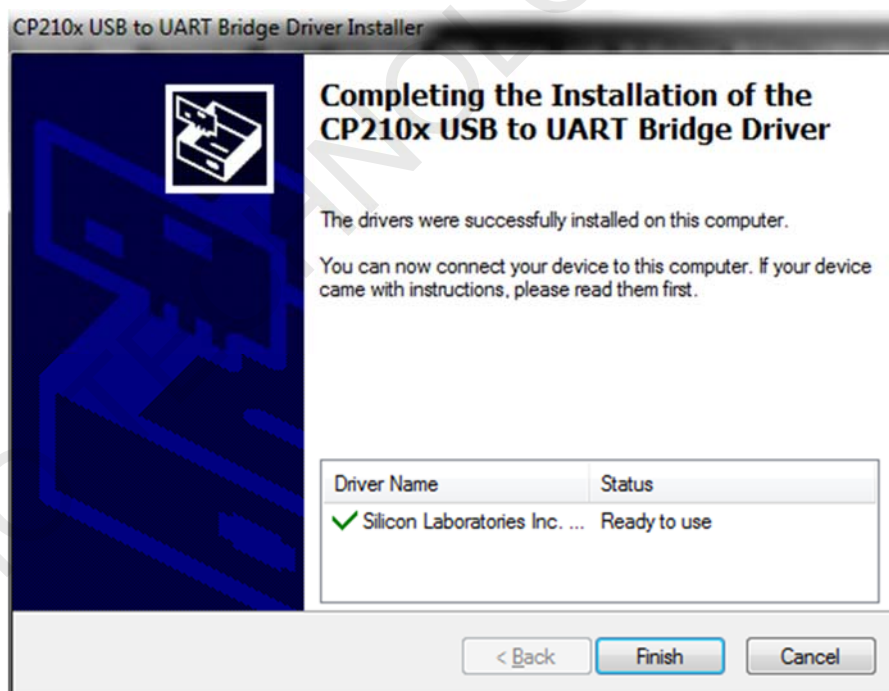
- Step 7 → click **Next>**.



- Step 8 → Select “I, agree...” and Click **Next**



- Step 9 → Click **Next**.

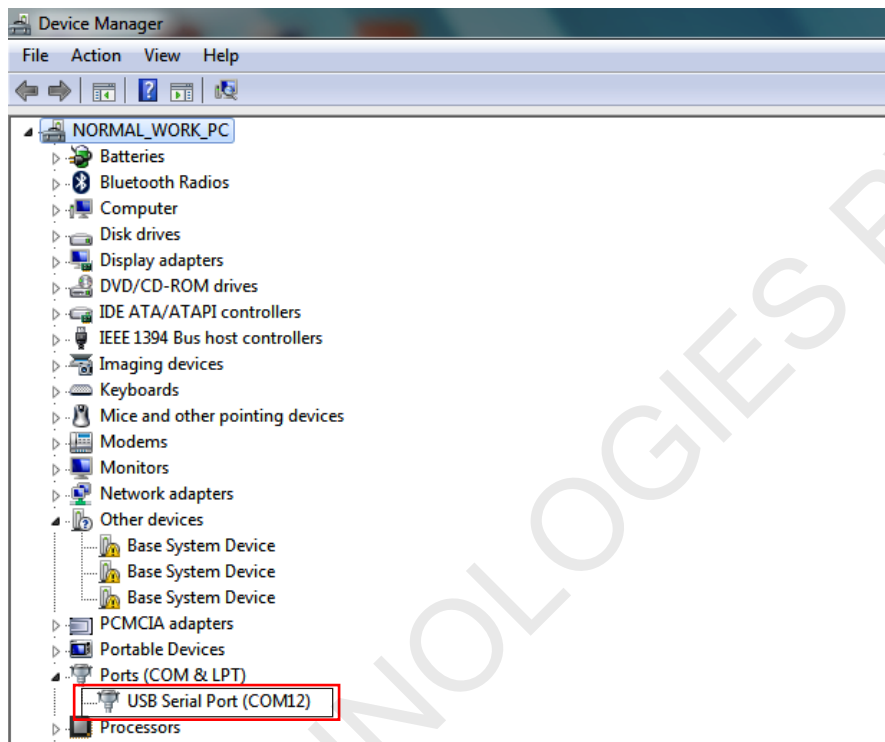


Note:

Your computer will be restarted automatically on completion.

Note: To confirm that the device is properly installed, go to “Device Manager” → go to “Ports (Com & LPT)” → Confirm “USB Serial Port” is assigned a ‘COM’ port (refer image below).

- ▶ Step 1 → Connect USB cable to device and your computer. ‘**GREEN**’ LED will glow indicating that power is turned on.



III. GPS activation (steps need to be repeated each time the device is plugged in)

- ▶ Step 1 → Once device is connected to your computer, wait 3-4 minutes after which 'RED' LED will start blinking to indicate that GPS signals are being received.

Note:

Step 2 only after 'RED' LED starts blinking

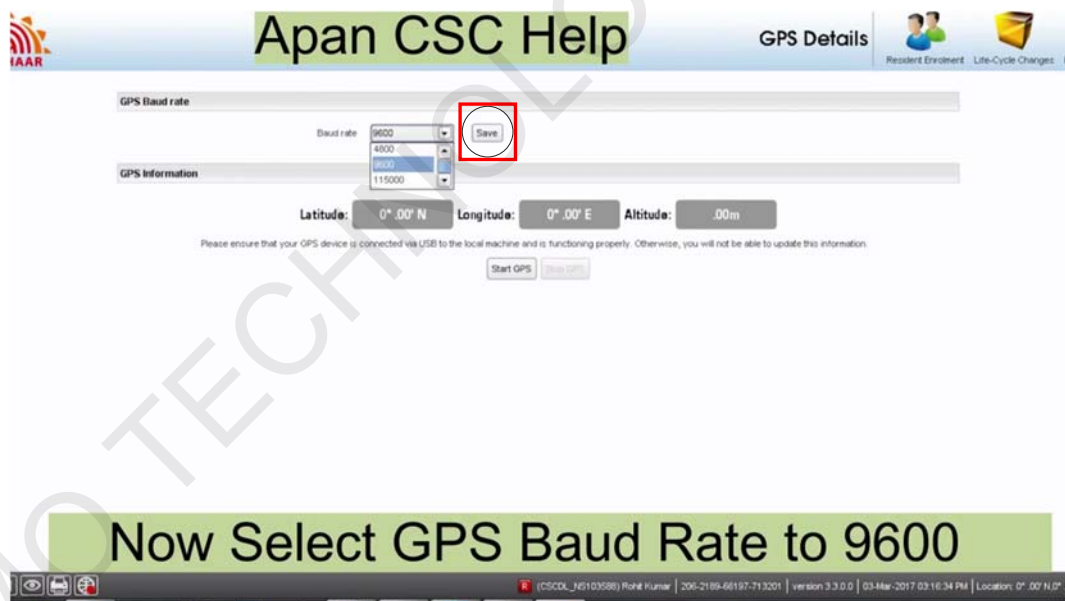
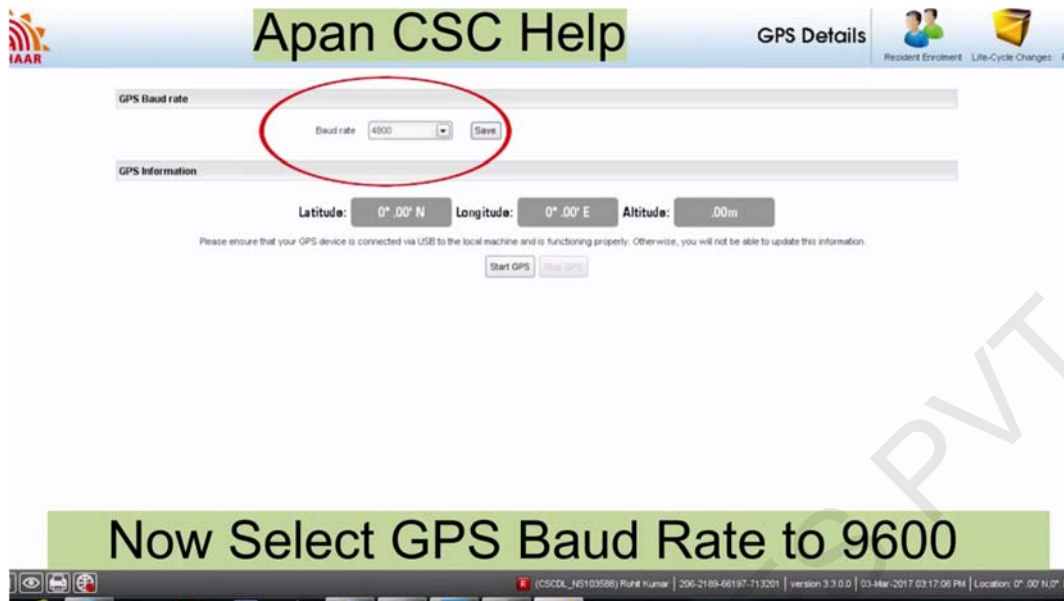
- ▶ Step 2 → Open "Aadhar Client Software".
- ▶ Step 3 → Click on "Settings" menu and open "GPS details" from the drop-down menu.

The screenshot shows the 'Apan CSC Help' software interface for 'Enrol a Resident'. The form is divided into 'Personal Details' and 'Contact Details (Default)' sections. A green banner at the bottom of the form area reads 'Click On GPS Details and Then click Yes'. The interface includes various input fields for name, gender, age, address, and contact information. A 'Copy Previous' button is visible on the right side of the form.

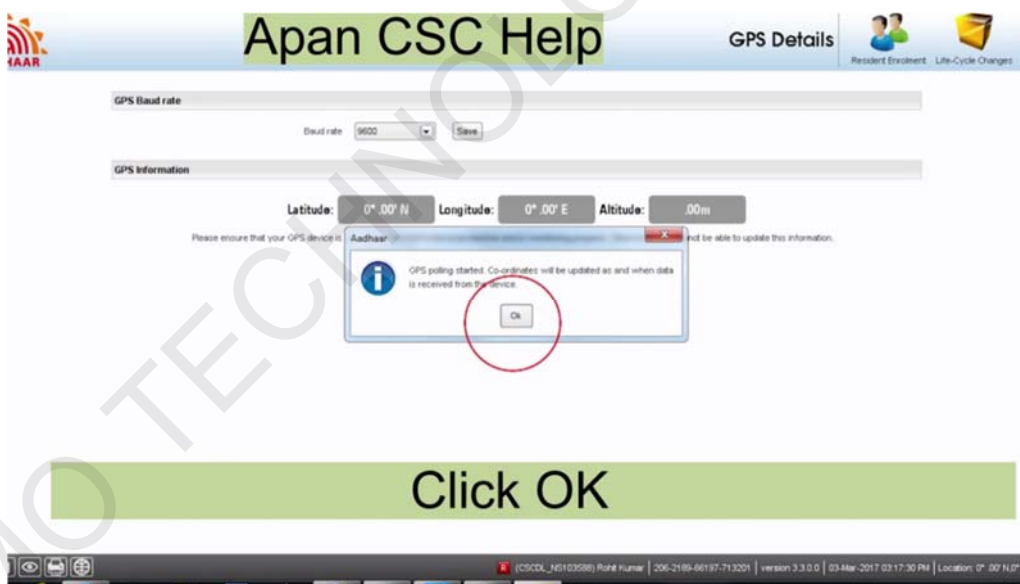
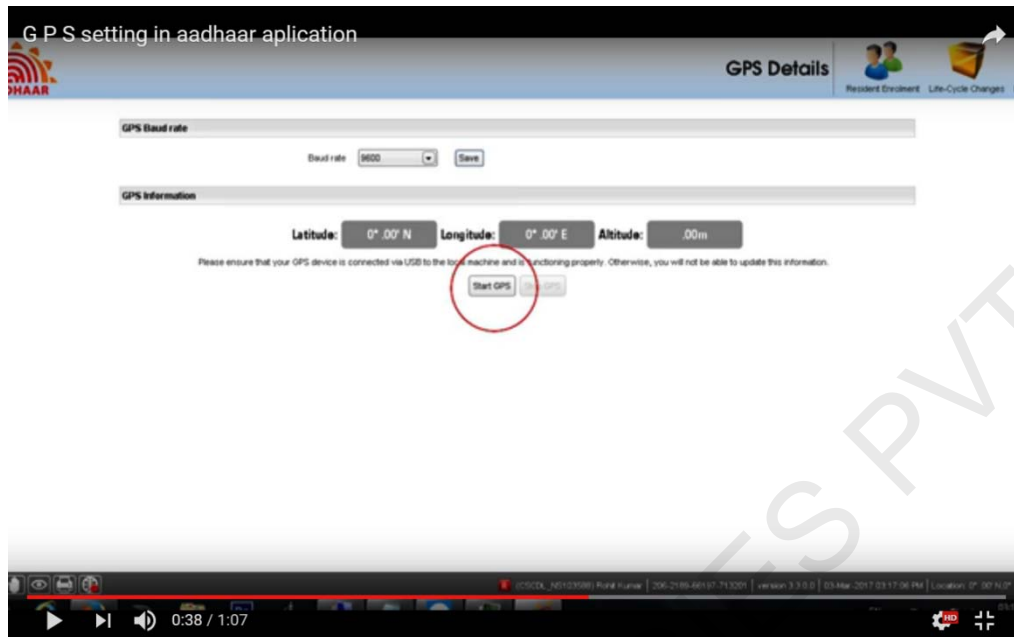
- ▶ Step 4 → Click OK

The screenshot shows the 'G P S setting in aadhaar application' dialog box. The dialog box contains the text: 'This will cancel the current enrolment. Data for the current process, collected so far, will be lost. Do you wish to continue?'. There are 'Yes' and 'No' buttons. The 'Yes' button is circled in red. The background shows the 'Aadhaar' application interface with the 'Enrol a Resident' form.

Step 5 → Go to “**Baud rate**” under “**GPS Baud rate**” and select “**9600**” from the drop-down menu. Click “**Save**”.



- Step 6 → Click **“Start GPS”**.



Note: In a few moments after the above steps are done, small pop-up on the left-hand corner of your screen will show “GPS device active” and the GPS coordinates under “GPS Information” will update. This will confirm that you have switched on GPS on “Aadhar Client Software” successfully.

GPS Baud rate

Baud rate: 9600 Save

GPS Information

Latitude: 0° .00' N Longitude: 0° .00' E Altitude: .00m

Please ensure that your GPS device is connected via USB to the local machine and is functioning properly. Otherwise, you will not be able to update this information.

Start GPS Stop GPS

Now GPS Device is Activated



GPS Baud rate

Baud rate: 9600 Save

GPS Information

Latitude: 0° .00' N Longitude: 0° .00' E Altitude: .00m

Please ensure that your GPS device is connected via USB to the local machine and is functioning properly. Otherwise, you will not be able to update this information.

Start GPS Stop GPS

Now GPS Device is Activated

